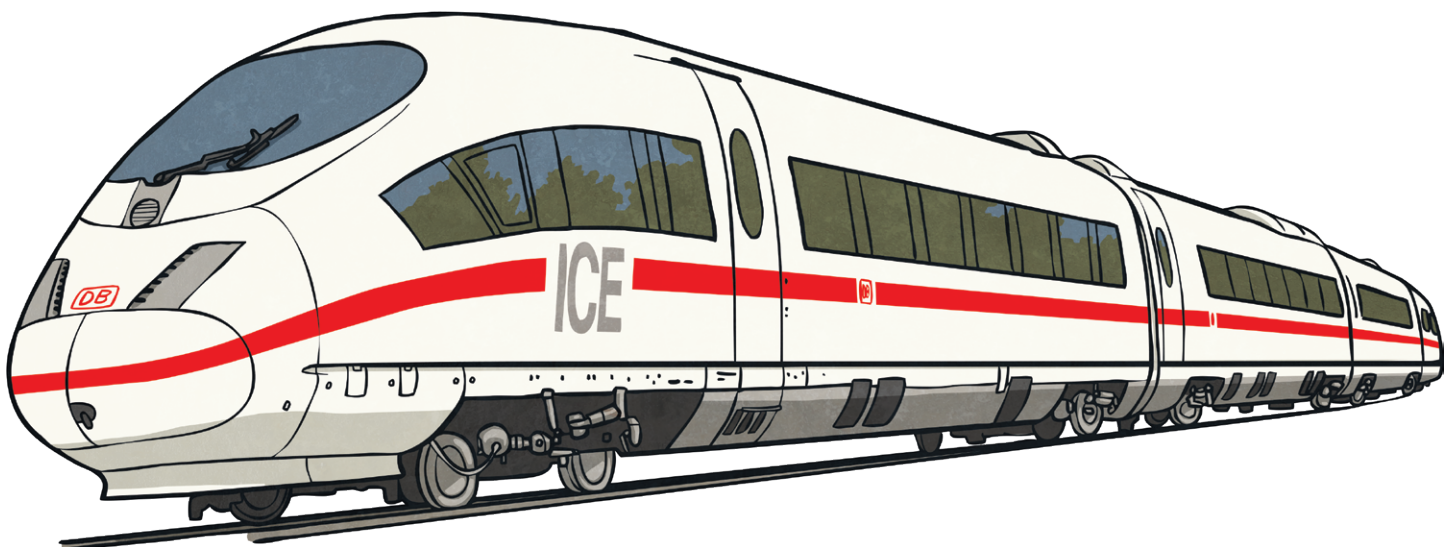


Tricky Train Timetable

Use these key facts to complete the train timetable:

- Train journeys take 2 hours and 10 minutes in the morning (before noon).
- Train journeys usually take 3 hours and 5 minutes in the afternoon.

Departs	Arrives
08:30	10: ____
09: ____	____:10
____:45	21: ____
00:00	____: ____



Tricky Train Timetable - **Answers**

Departs	Arrives
08:30	10:40
09:00	11:10
18:45	21:50
00:00	02:10